



**Noise Monitoring Result**

**Day Time (0700 - 1900hrs on normal weekdays)**

Location: M1a - Harbour Road Sports Centre

Date	Time	Weather	Measurement Noise Level			Baseline Level	Construction Noise Level	Limit Level
			Leq	L10	L90	Leq	Leq	Leq
Unit: dB(A), (30-min)								
29/12/15	11:00	Fine	77.1	78.5	74.0	72	75	75
06/01/16	10:15	Fine	77.0	79.0	76.0	72	75	75
12/01/16	11:00	Fine	79.7	81.0	77.5	72	79	75
19/01/16	10:25	Fine	84.8	86.5	80.5	72	85	75
27/01/16	11:25	Cloudy	76.2	78.0	71.5	72	74	75

Location: M2b - Noon-day gun area

Date	Time	Weather	Measurement Noise Level			Baseline Level	Construction Noise Level	Limit Level
			Leq	L10	L90	Leq	Leq	Leq
Unit: dB(A), (30-min)								
29/12/15	13:00	Cloudy	69.5	71.0	66.5	68	65	75
06/01/16	11:10	Fine	68.6	70.0	67.0	68	62	75
12/01/16	13:00	Fine	69.6	70.5	67.5	68	65	75
19/01/16	11:30	Fine	68.0	69.5	66.5	68	57	75
27/01/16	10:45	Cloudy	70.6	72.0	68.0	68	68	75

Location: M3a - Tung Lo Wan Fire Station

Date	Time	Weather	Measurement Noise Level			Baseline Level	Construction Noise Level	Limit Level
			Leq	L10	L90	Leq	Leq	Leq
Unit: dB(A), (30-min)								
28/12/15	14:22	Cloudy	66.0	67.5	63.5	69	66	75
04/01/16	8:00	Fine	66.5	67.5	65.0	69	67	75
12/01/16	8:00	Fine	65.5	67.5	63.0	69	66	75
19/01/16	13:00	Fine	66.7	67.5	65.0	69	67	75
26/01/16	9:40	Cloudy	65.2	66.5	63.0	69	65	75

Location: M4b - Victoria Centre

Date	Time	Weather	Measurement Noise Level			Baseline Noise Level	Construction Noise Level	Limit Level
			Leq	L10	L90	Leq	Leq	Leq
Unit: dB(A), (30min)								
28/12/15	15:05	Cloudy	67.2	69.5	63.0	67	67	75
04/01/16	8:45	Fine	68.5	69.0	67.0	67	62	75
12/01/16	8:40	Fine	70.5	71.0	68.0	67	68	75
19/01/16	13:41	Fine	68.9	71.5	65.5	67	64	75
26/01/16	10:15	Cloudy	67.2	69.0	64.5	67	67	75

Location: M5b - City Garden

Date	Time	Weather	Measurement Noise Level			Baseline Level	Construction Noise Level	Limit Level
			Leq	L10	L90	Leq	Leq	Leq
Unit: dB(A), (30min)								
29/12/15	13:47	Fine	67.8	69.0	65.0	68	68	75
04/01/16	9:30	Fine	64.5	66.0	63.5	68	65	75
12/01/16	9:25	Fine	65.5	66.0	64.5	68	66	75
19/01/16	14:24	Fine	71.0	72.5	65.5	68	68	75
26/01/16	10:55	Cloudy	68.2	69.5	65.0	68	55	75

Location: M6 - HK Baptist Church Henrietta Secondary School

Date	Time	Weather	Measurement Noise Level			Baseline Level	Construction Noise Level	Limit Level
			Leq	L10	L90	Leq	Leq	Leq
Unit: dB(A), (30-min)								
29/12/15	14:26	Fine	70.4	72.0	67.0	71	70	70
04/01/16	10:05	Fine	72.3	73.0	70.5	71	67	70
12/01/16	10:00	Fine	72.4	73.5	70.0	71	68	70
19/01/16	15:00	Fine	72.8	74.0	71.0	71	69	70
26/01/16	11:30	Cloudy	71.5	72.0	70.0	71	64	70



**Noise Monitoring Result**

**Day Time (0700 - 1900hrs on normal weekdays)**

Location: M7e - International Finance Centre (Eastern End of Podium) (Reference Station)

Date	Time	Weather	Measurement Noise Level			Baseline Level	Construction Noise Level	Limit Level
			Leq	L10	L90	Leq	Leq	Leq
Unit: dB(A), (30-min)								
29/12/15	9:00	Fine	67.2	68.0	66.0	67	57	N/A
05/01/16	8:25	Fine	66.0	67.0	65.5	67	66	N/A
11/01/16	8:25	Fine	66.0	68.0	65.0	67	66	N/A
19/01/16	8:00	Fine	66.5	67.0	65.0	67	67	N/A
27/01/16	8:15	Cloudy	66.7	68.0	65.0	67	67	N/A

Location: M7w - International Finance Centre (Western End of Podium)

Date	Time	Weather	Measurement Noise Level			Baseline Level	Construction Noise Level	Limit Level
			Leq	L10	L90	Leq	Leq	Leq
Unit: dB(A), (30-min)								
29/12/15	9:35	Fine	66.5	67.5	65.5	69	67	75
05/01/16	9:30	Fine	66.0	66.5	64.0	69	66	75
11/01/16	9:30	Fine	64.0	66.0	63.0	69	64	75
19/01/16	8:35	Fine	65.0	66.0	63.0	69	65	75
27/01/16	8:48	Cloudy	68.1	70.5	66.5	69	68	75

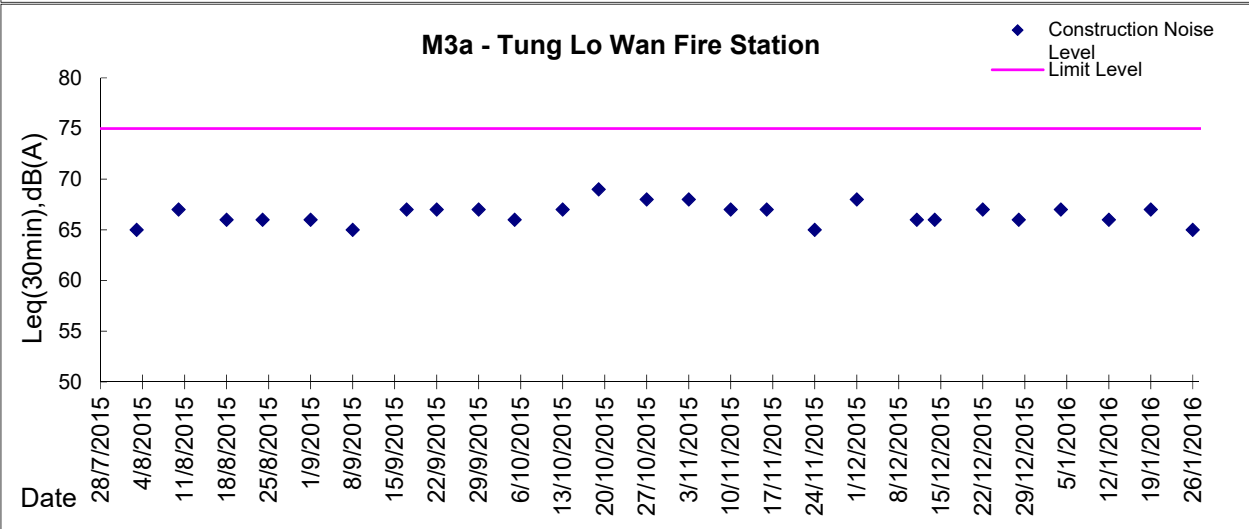
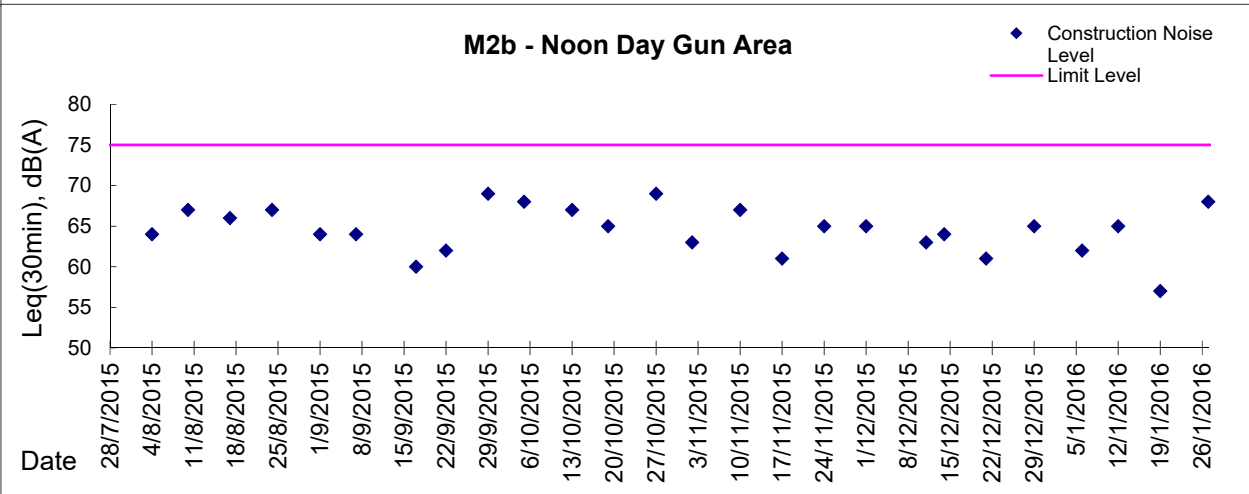
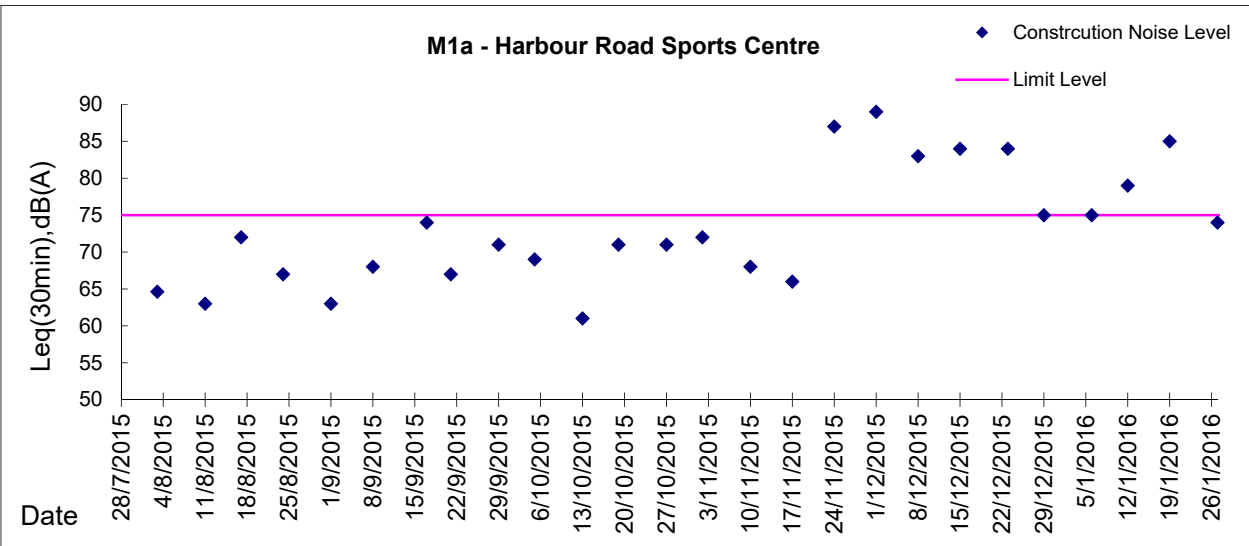
Location: M8 - City Hall

Date	Time	Weather	Measurement Noise Level			Baseline Level	Construction Noise Level	Limit Level
			Leq	L10	L90	Leq	Leq	Leq
Unit: dB(A), (30-min)								
29/12/15	10:10	Fine	62.7	65.0	59.0	64	63	70
05/01/16	10:25	Fine	64.0	65.5	62.0	64	64	70
11/01/16	10:20	Fine	63.5	64.0	63.0	64	64	70
19/01/16	9:18	Fine	61.9	64.0	57.5	64	62	70
26/01/16	14:00	Cloudy	62.6	64.5	58.5	64	63	70



**Graphic Presentation of Noise Monitoring Result**

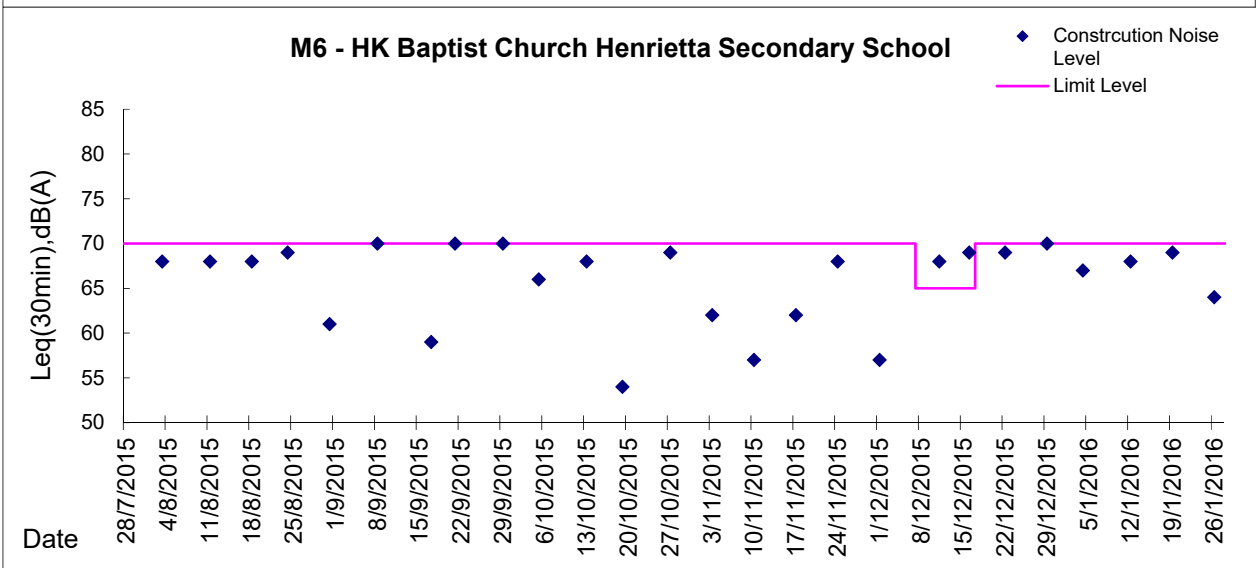
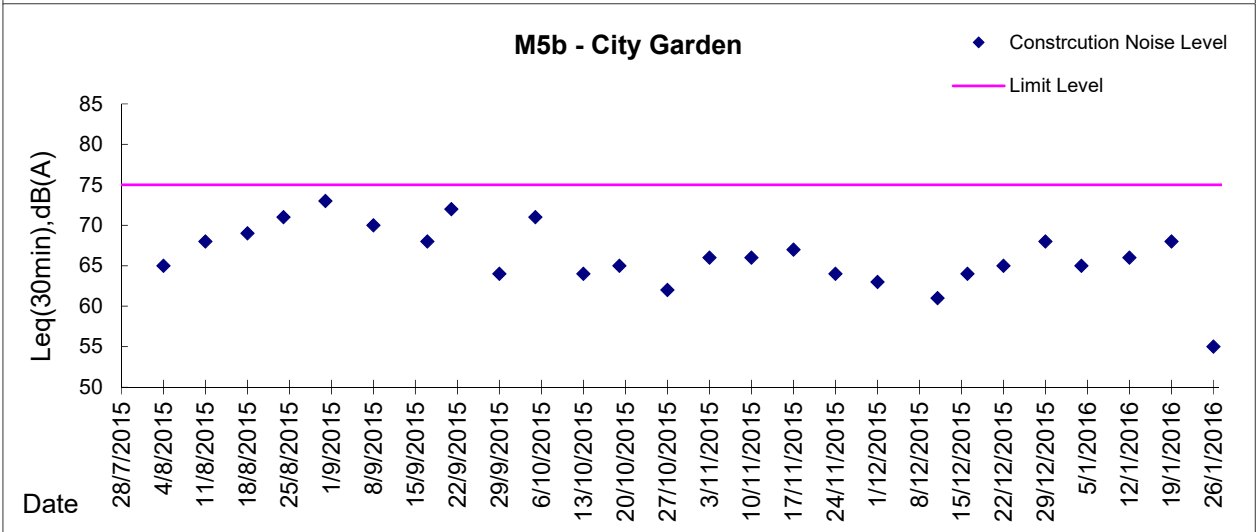
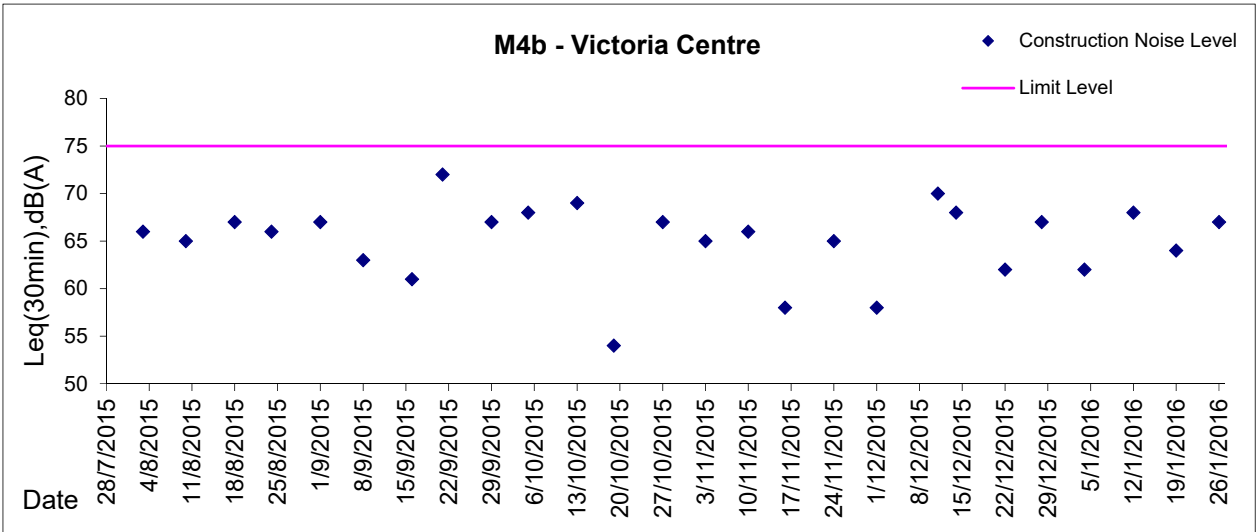
**Day Time (0700 - 1900hrs on normal weekdays)**





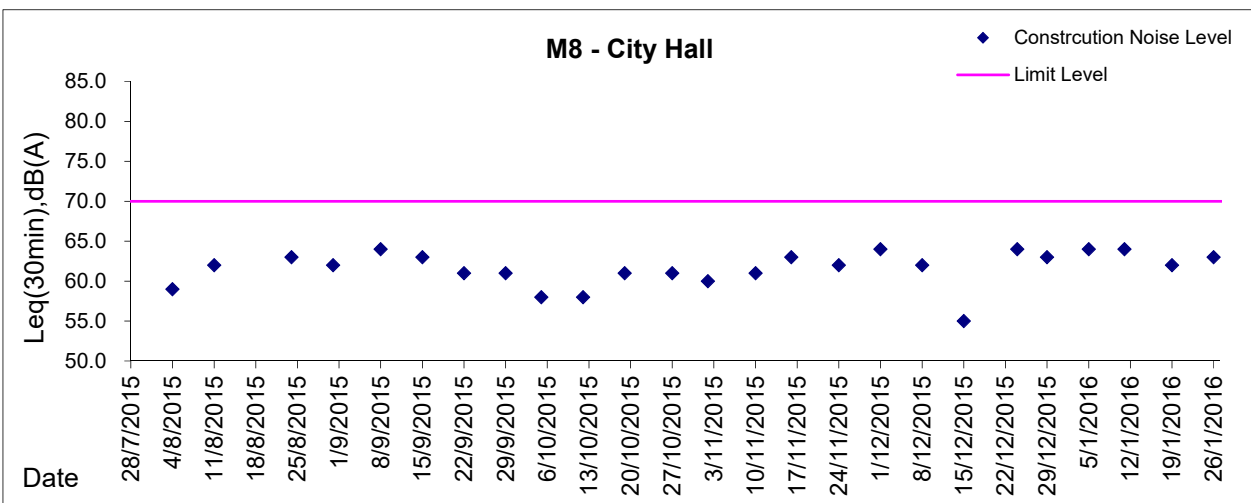
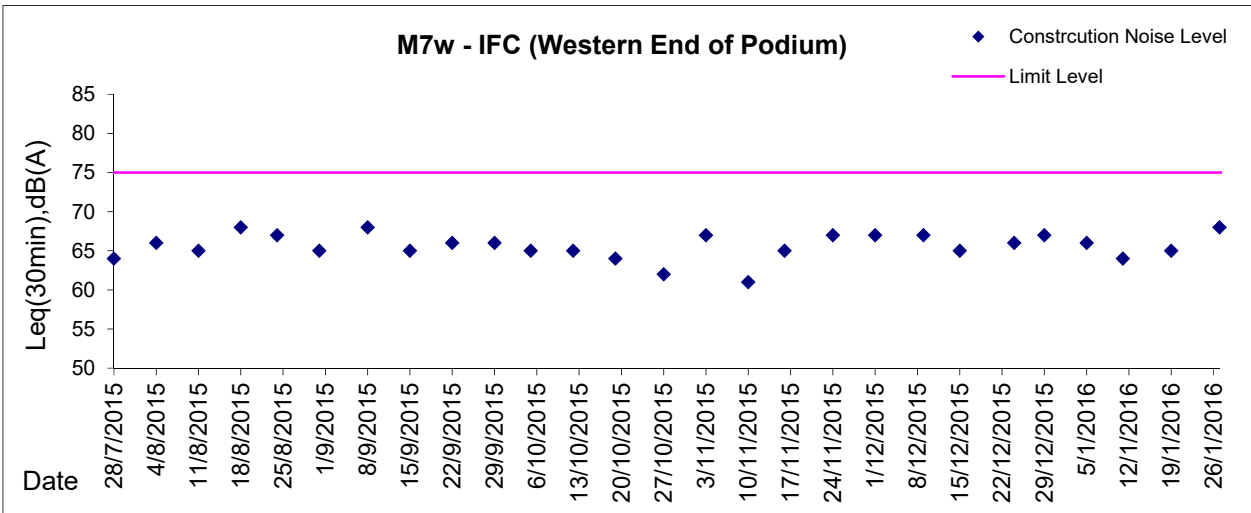
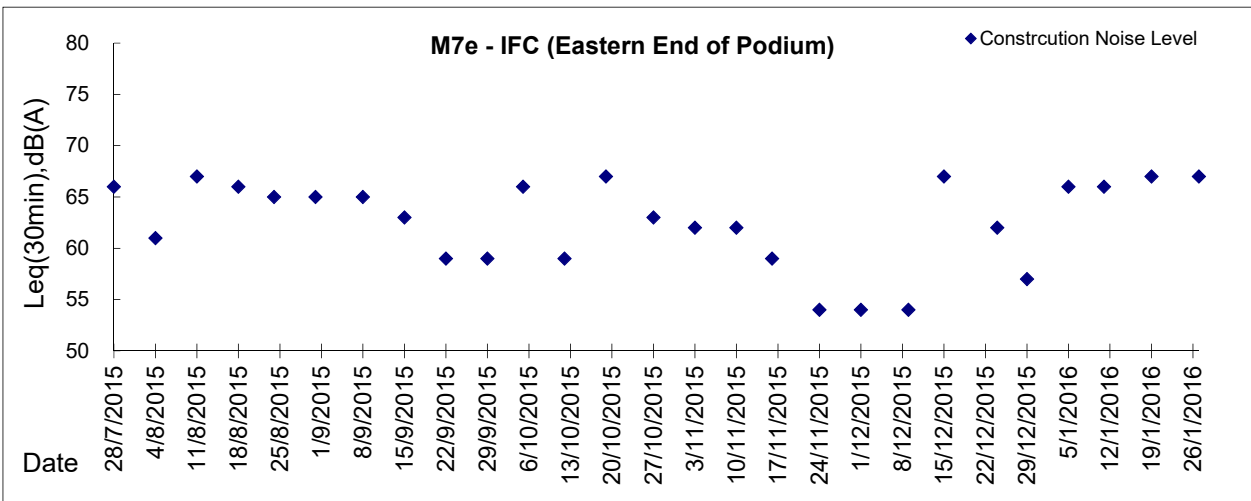
Graphic Presentation of Noise Monitoring Result

Day Time (0700 - 1900hrs on normal weekdays)





**Graphic Presentation of Noise Monitoring Result**  
**Day Time (0700 - 1900hrs on normal weekdays)**



\* Remark: M7e - IFC (Eastern End of Podium) is a reference monitoring station